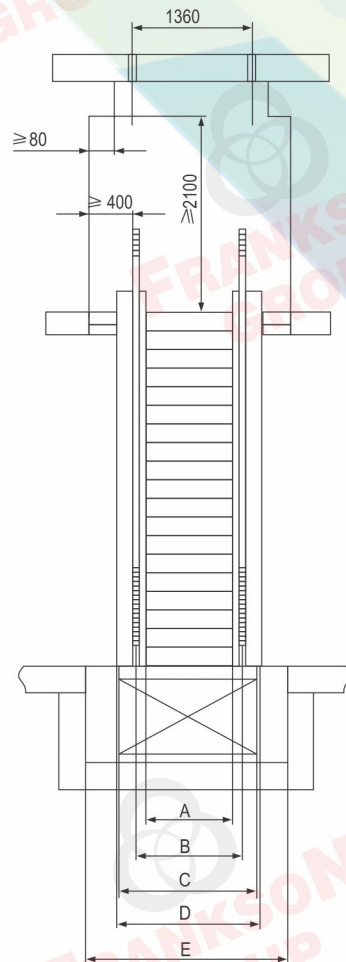
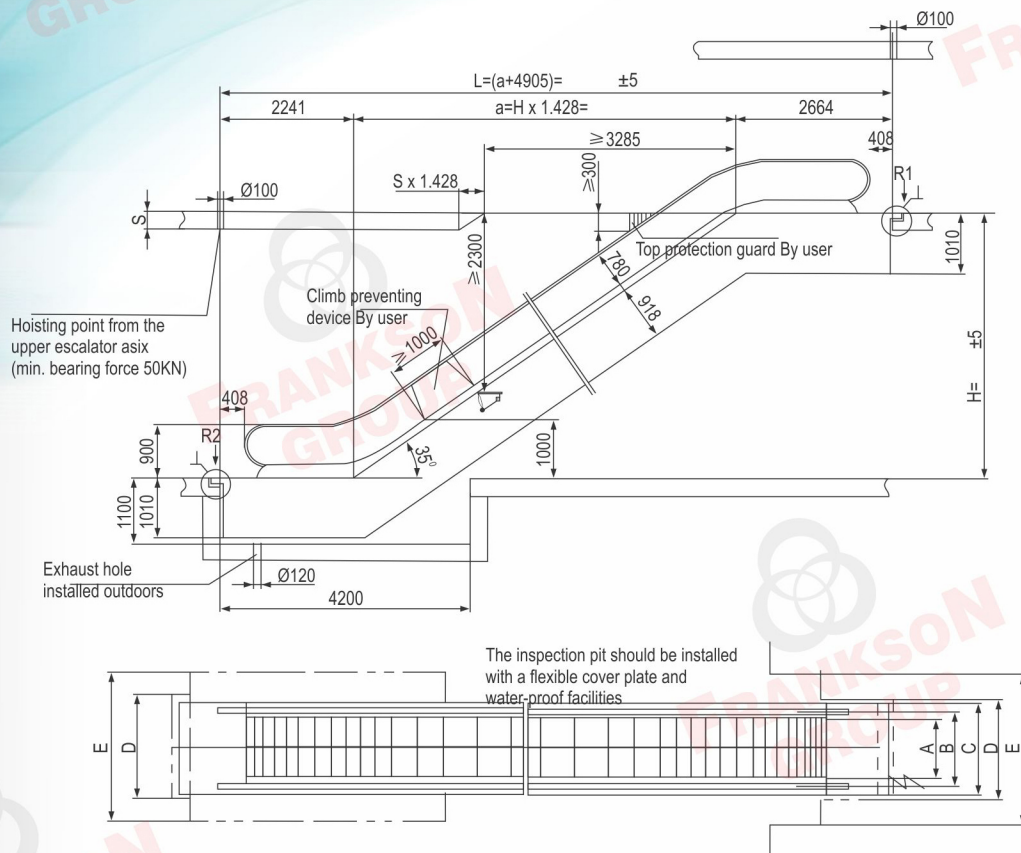




FRANKSON[®]
GROUP

Elevator & Escalator

35° Escalator Construction layout parameters



Step width (mm)	A	B	C	D	E
1000	1000	1238	1600	1660	2310
800	800	1038	1400	1460	2110
600	600	838	1200	1260	1910

Model	Traveling height (mm)	Net weight KN	Supporting		Motor Power	Transport size	
			R1 KN	R2 KN		H	L
SME(600)-35 (4500/h) speed 0.5m/s	3000	54	43	39	8	2850	10180
	3500	57	46	41		2890	11030
	4000	60	59	44		2920	11890
	4500	64	52	46		2940	12750
	5000	67	54	49	11	2970	13610
	5500	70	57	51		2980	14470
	6000	73	60	54		3000	15330
SME(800)-35 (6750/H) speed 0.5m/s	3000	56	49	44	8	2850	10180
	3500	60	52	47		2890	11030
	4000	63	56	50		2920	11890
	4500	66	59	53		2940	12750
	5000	70	62	56	11	2970	13610
	5500	73	65	59		2780	14470
	6000	76	69	61		3000	15330
SME(1000)-35 (9000/H) speed 0.5m/s	3000	60	56	30	8	2850	10180
	3500	64	60	53		2890	11030
	4000	67	64	57		2920	11890
	4500	71	67	60		2940	12750
	5000	74	71	64	11	2970	13610
	5500	82	77	69		2980	14470
	6000	85	81	72		3000	15330